

## City: Wilton



**Barbara Sweeney**  
Residential Real Estate Specialist  
(203) 451-6522  
www.BarbaraSweeneyHomes.com  
Barbara.Sweeney@cbmoves.com



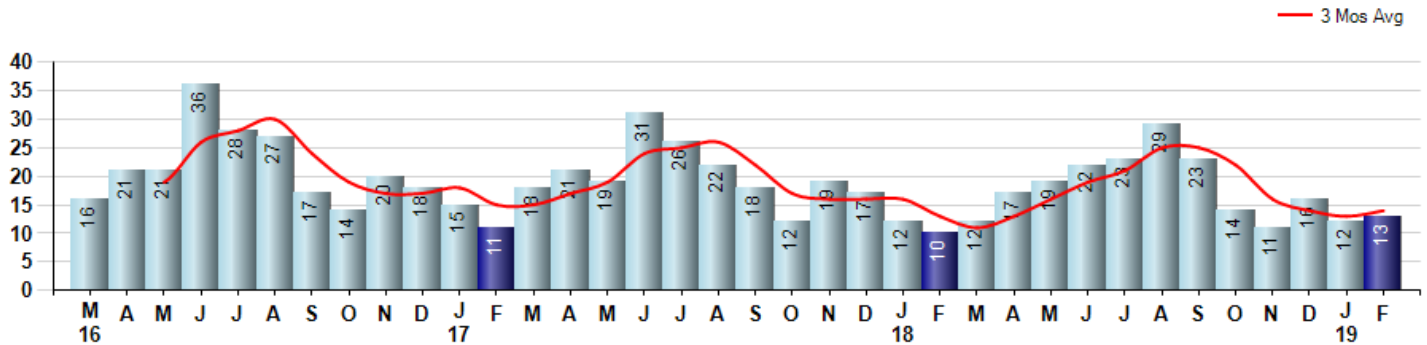
Price Range: 0 to 999999999 | Properties: Single Family Home

Market Profile & Trends Overview	Month	Trending Versus*:				Trending Versus*:		
		LM	L3M	PYM	LY	YTD	PriorYTD	PriorYear
Median List Price of all Current Listings	\$855,000	4%		-5%				
Average List Price of all Current Listings	\$1,022,612	3%		-9%				
February Median Sales Price	\$627,500	0%	-9%	-27%	-19%	\$627,500	-23%	-19%
February Average Sales Price	\$701,615	-2%	-5%	-35%	-18%	\$708,940	-24%	-17%
Total Properties Currently for Sale (Inventory)	179	11%		26%				
February Number of Properties Sold	13	8%		30%			14%	
February Average Days on Market (Solds)	177	74%	27%	35%	69%	141	-8%	34%
Asking Price per Square Foot (based on New Listings)	\$225	-7%	-4%	-5%	-9%	\$232	1%	-6%
February Sold Price per Square Foot	\$225	8%	3%	-8%	-2%	\$217	-7%	-5%
February Month's Supply of Inventory	13.8	2%	12%	-3%	16%	13.6	11%	15%
February Sale Price vs List Price Ratio	88.3%	-5.3%	-3%	1%	-4.7%	90.7%	0.4%	-2.1%

\* LM=Last Month / L3M=Last 3 Months / PYM=Same Month Prior Year / LY=Last Year / YTD = Year-to-date

### Property Sales

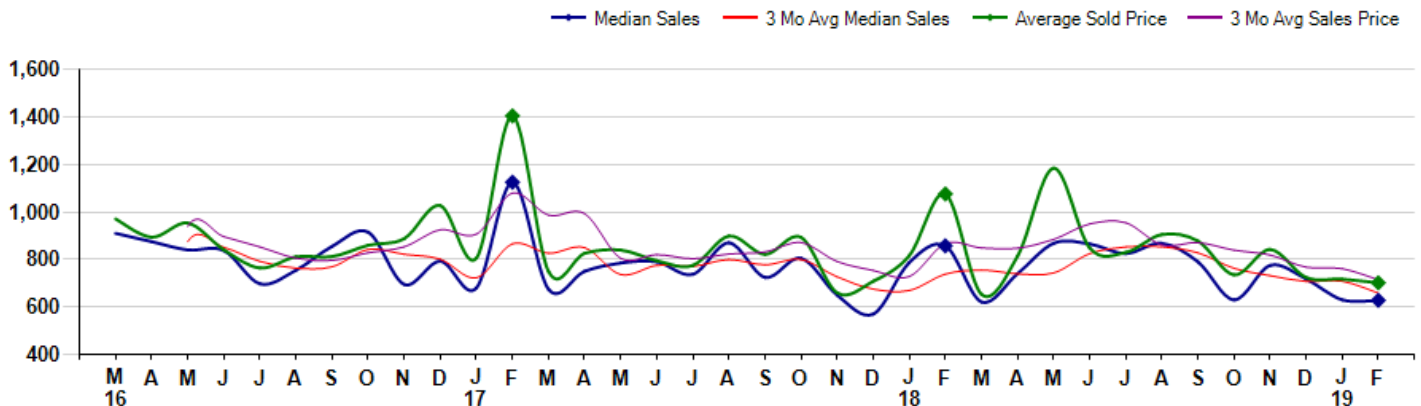
February Property sales were 13, up 30.0% from 10 in February of 2018 and 8.3% higher than the 12 sales last month. February 2019 sales were at their highest level compared to February of 2018 and 2017. February YTD sales of 25 are running 13.6% ahead of last year's year-to-date sales of 22.



### Prices

The Median Sales Price in February was \$627,500, down -26.8% from \$857,000 in February of 2018 and down -0.4% from \$630,000 last month. The Average Sales Price in February was \$701,615, down -34.8% from \$1,075,550 in February of 2018 and down -2.1% from \$716,875 last month. February 2019 ASP was at the lowest level compared to February of 2018 and 2017.

Median means Middle (the same # of properties sold above and below Median) (000's)



## City: Wilton



**Barbara Sweeney**  
 Residential Real Estate Specialist  
 (203) 451-6522  
 www.BarbaraSweeneyHomes.com  
 Barbara.Sweeney@cbmoves.com



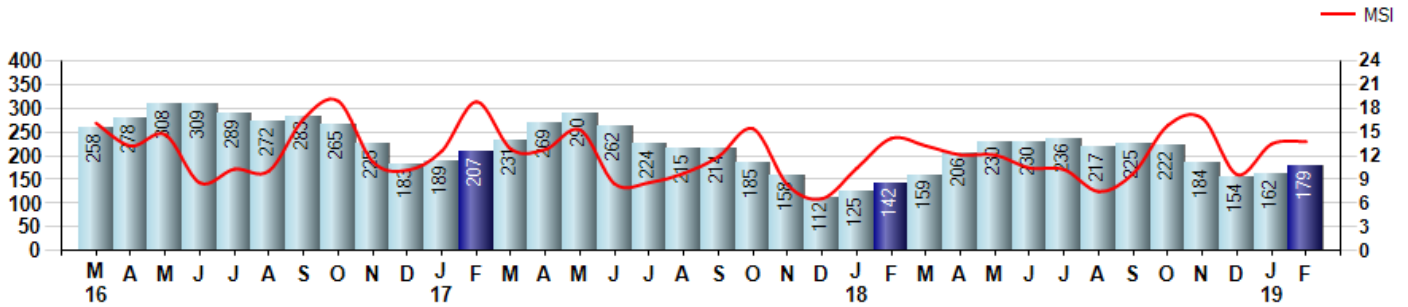
Price Range: 0 to 999999999 | Properties: Single Family Home

### Inventory & MSI

The Total Inventory of Properties available for sale as of February was 179, up 10.5% from 162 last month and up 26.1% from 142 in February of last year. February 2019 Inventory was at a mid range compared to February of 2018 and 2017.

A comparatively lower MSI is more beneficial for sellers while a higher MSI is better for buyers. The February 2019 MSI of 13.8 months was at its lowest level compared with February of 2018 and 2017.

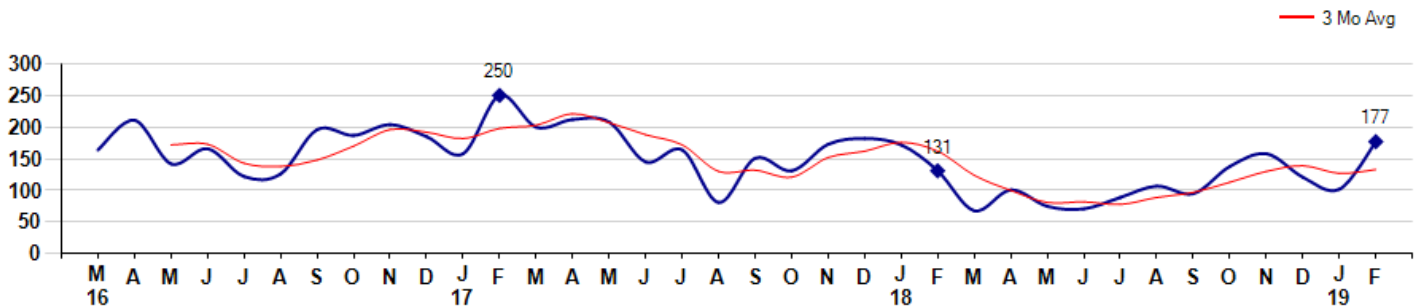
MSI is the # of months needed to sell all of the Inventory at the monthly Sales Pace



### Market Time

The average Days On Market(DOM) shows how many days the average Property is on the Market before it sells. An upward trend in DOM tends to indicate a move towards more of a Buyer's market, a downward trend a move towards more of a Seller's market. The DOM for February was 177, up 73.5% from 102 days last month and up 35.1% from 131 days in February of last year. The February 2019 DOM was at a mid range compared with February of 2018 and 2017.

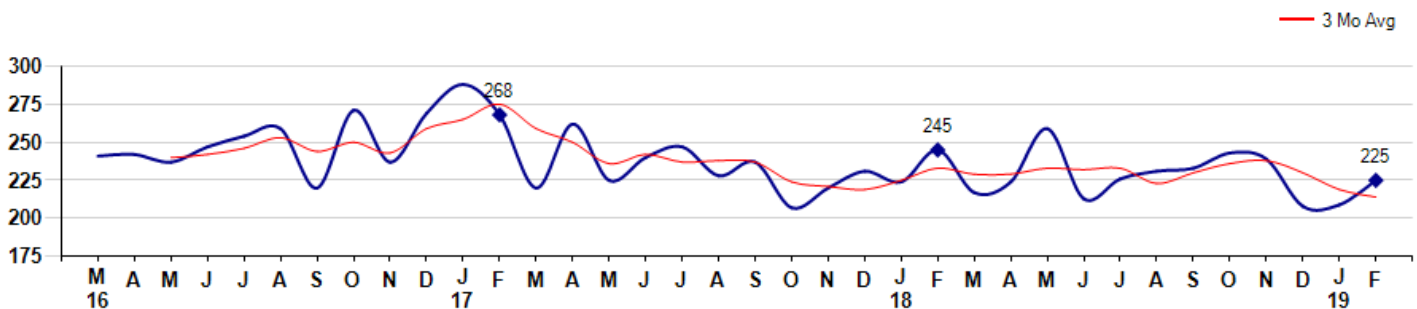
Average Days on Market(Listing to Contract) for properties sold during the month



### Selling Price per Square Foot

The Selling Price per Square Foot is a great indicator for the direction of Property values. Since Median Sales Price and Average Sales price can be impacted by the 'mix' of high or low end Properties in the market, the selling price per square foot is a more normalized indicator on the direction of Property values. The February 2019 Selling Price per Square Foot of \$225 was up 7.7% from \$209 last month and down -8.2% from \$245 in February of last year.

Average Selling Price per Square Foot for properties that sold during the month



## City: Wilton



**Barbara Sweeney**  
 Residential Real Estate Specialist  
 (203) 451-6522  
 www.BarbaraSweeneyHomes.com  
 Barbara.Sweeney@cbmoves.com

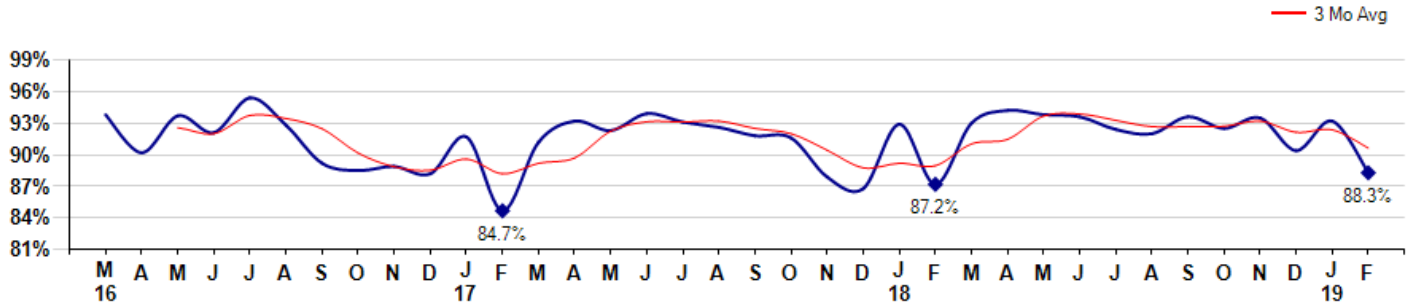


Price Range: 0 to 999999999 | Properties: Single Family Home

### Selling Price vs Listing Price

The Selling Price vs Listing Price reveals the average amount that Sellers are agreeing to come down from their list price. The lower the ratio is below 100% the more of a Buyer's market exists, a ratio at or above 100% indicates more of a Seller's market. The February 2019 Selling Price vs List Price of 88.3% was down from 93.2% last month and up from 87.2% in February of last year.

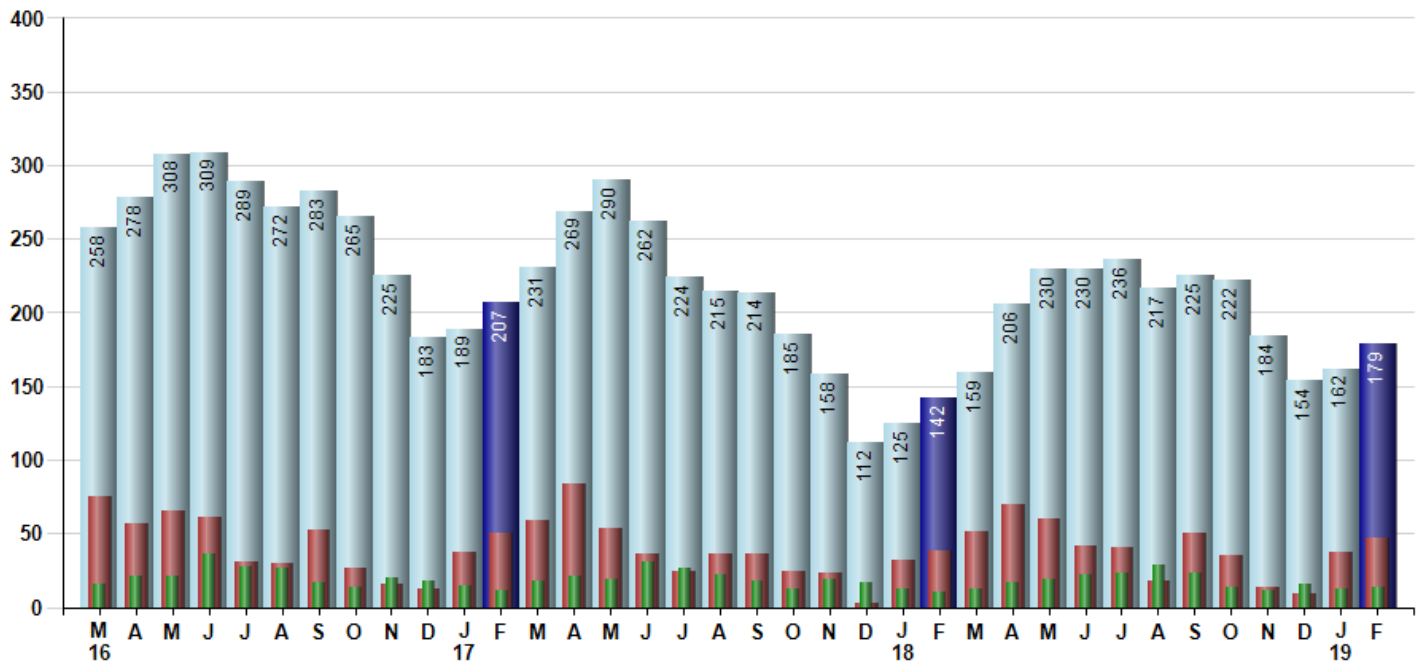
Avg Selling Price divided by Avg Listing Price for sold properties during the month



### Inventory / New Listings / Sales

This last view of the market combines monthly inventory of Properties for sale along with New Listings and Sales. The graph shows the basic annual seasonality of the market as well as the relationship between these items. The number of New Listings in February 2019 was 47, up 27.0% from 37 last month and up 23.7% from 38 in February of last year.

Inventory (light blue), New Listings (red), Sold (green)



© 2019 Coldwell Banker Residential Brokerage. All Rights Reserved. Coldwell Banker Residential Brokerage fully supports the principles of the Fair Housing Act and the Equal Opportunity Act. Coldwell Banker Residential Brokerage is operated by a subsidiary of NRT LLC. Coldwell Banker and the Coldwell Banker Logo are registered service marks owned by Coldwell Banker Real Estate LLC.

Based on information from SmartMLS for the period 3/1/2016 through 2/28/2019. Due to MLS reporting methods and allowable reporting policy, this data is only informational and may not be completely accurate. Therefore, Coldwell Banker Residential Brokerage does not guarantee the data accuracy. Data maintained by the MLS's may not reflect all real estate activity in the market.

