

City: Weston



Barbara Sweeney
Residential Real Estate Specialist
(203) 451-6522
www.BarbaraSweeneyHomes.com
Barbara.Sweeney@cbmoves.com



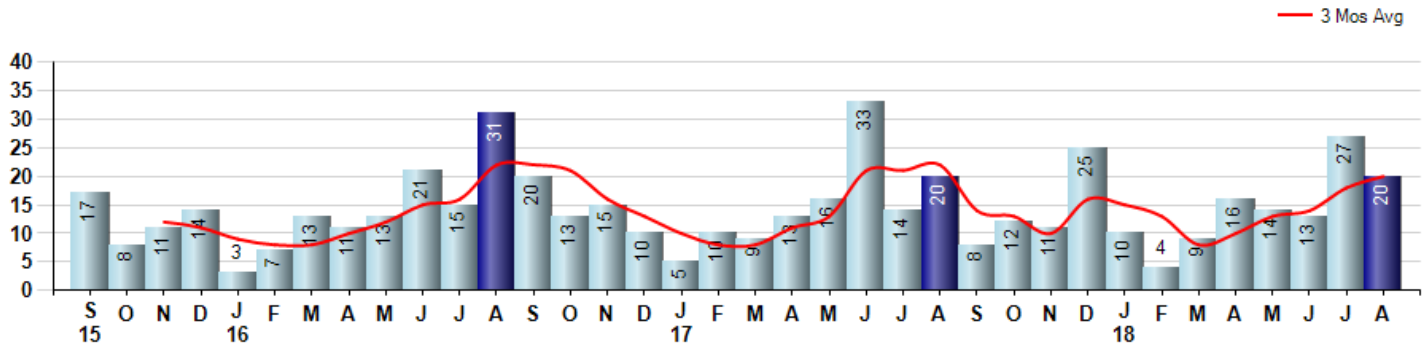
Price Range: 0 to 999999999 | Properties: Single Family Home

Market Profile & Trends Overview	Month	Trending Versus*:				Trending Versus*:		
		LM	L3M	PYM	LY	YTD	PriorYTD	PriorYear
Median List Price of all Current Listings	\$895,000	0%		-1%				
Average List Price of all Current Listings	\$1,079,774	-2%		3%				
August Median Sales Price	\$692,500	-18%	0%	-13%	-11%	\$690,000	-13%	-12%
August Average Sales Price	\$855,195	-8%	3%	-7%	1%	\$803,536	-7%	-5%
Total Properties Currently for Sale (Inventory)	167	1%		0%				
August Number of Properties Sold	20	-26%		0%			-6%	
August Average Days on Market (Solds)	94	12%	-4%	-30%	-40%	96	-42%	-39%
Asking Price per Square Foot (based on New Listings)	\$237	-1%	-1%	4%	-4%	\$239	-4%	-4%
August Sold Price per Square Foot	\$239	9%	6%	10%	7%	\$223	-1%	0%
August Month's Supply of Inventory	8.4	37%	-10%	0%	-40%	12.8	-13%	-7%
August Sale Price vs List Price Ratio	93.7%	1%	5%	2.3%	92.7%	0.5%	1.2%	

* LM=Last Month / L3M=Last 3 Months / PYM=Same Month Prior Year / LY=Last Year / YTD = Year-to-date

Property Sales

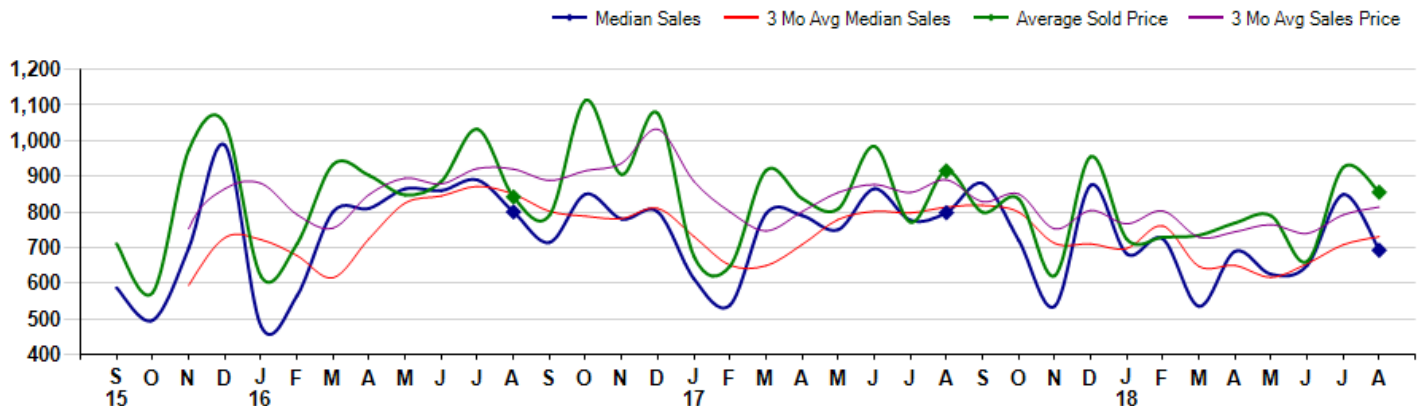
August Property sales were 20, equal to 20 in August of 2017 and -25.9% lower than the 27 sales last month. August 2018 sales were at their lowest level compared to August of 2017 and 2016. August YTD sales of 113 are running -5.8% behind last year's year-to-date sales of 120.



Prices

The Median Sales Price in August was \$692,500, down -13.2% from \$798,000 in August of 2017 and down -18.4% from \$849,000 last month. The Average Sales Price in August was \$855,195, down -6.5% from \$915,034 in August of 2017 and down -7.6% from \$925,204 last month. August 2018 ASP was at a mid range compared to August of 2017 and 2016.

Median means Middle (the same # of properties sold above and below Median) (000's)



City: Weston



Barbara Sweeney
 Residential Real Estate Specialist
 (203) 451-6522
 www.BarbaraSweeneyHomes.com
 Barbara.Sweeney@cbmoves.com



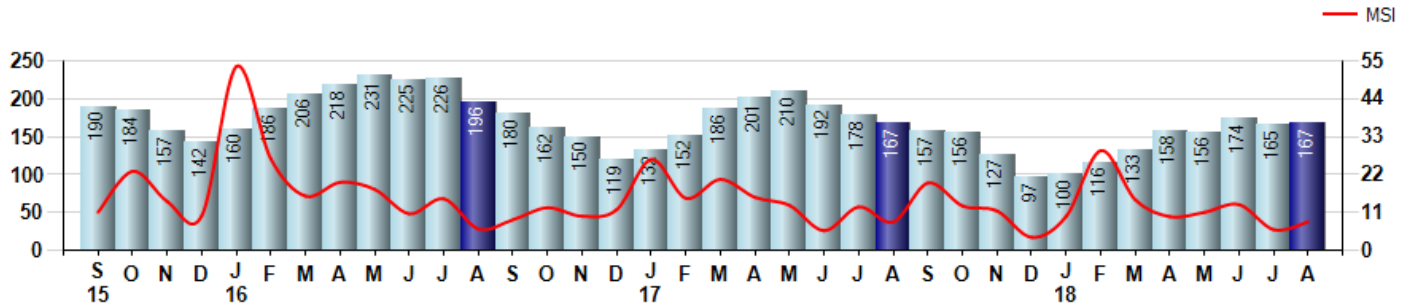
Price Range: 0 to 999999999 | Properties: Single Family Home

Inventory & MSI

The Total Inventory of Properties available for sale as of August was 167, up 1.2% from 165 last month and equal to 167 in August of last year. August 2018 Inventory was at the lowest level compared to August of 2017 and 2016.

A comparatively lower MSI is more beneficial for sellers while a higher MSI is better for buyers. The August 2018 MSI of 8.4 months was at a mid range compared with August of 2017 and 2016.

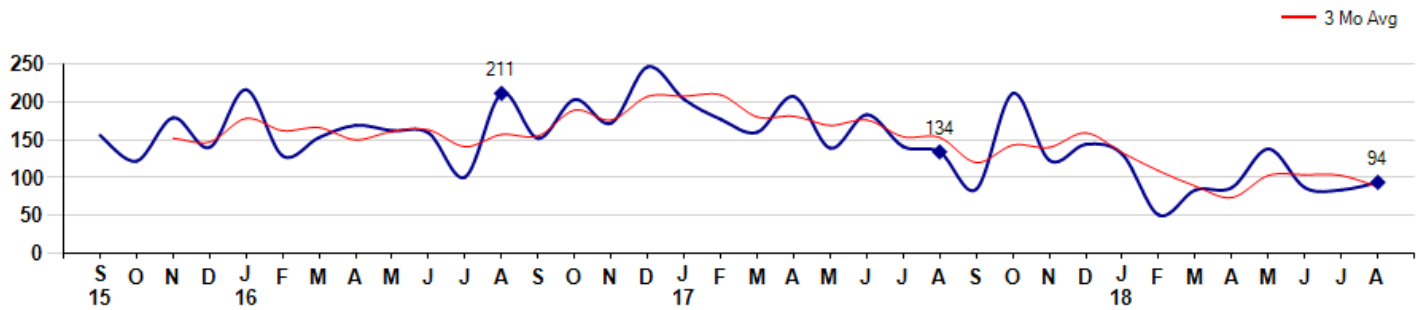
MSI is the # of months needed to sell all of the Inventory at the monthly Sales Pace



Market Time

The average Days On Market(DOM) shows how many days the average Property is on the Market before it sells. An upward trend in DOM tends to indicate a move towards more of a Buyer's market, a downward trend a move towards more of a Seller's market. The DOM for August was 94, up 11.9% from 84 days last month and down -29.9% from 134 days in August of last year. The August 2018 DOM was at its lowest level compared with August of 2017 and 2016.

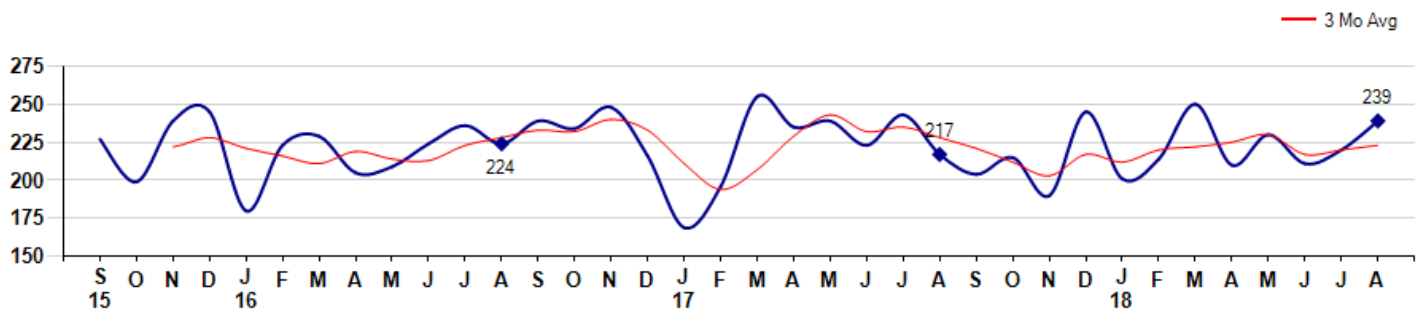
Average Days on Market(Listing to Contract) for properties sold during the month



Selling Price per Square Foot

The Selling Price per Square Foot is a great indicator for the direction of Property values. Since Median Sales Price and Average Sales price can be impacted by the 'mix' of high or low end Properties in the market, the selling price per square foot is a more normalized indicator on the direction of Property values. The August 2018 Selling Price per Square Foot of \$239 was up 8.6% from \$220 last month and up 10.1% from \$217 in August of last year.

Average Selling Price per Square Foot for properties that sold during the month



City: *Weston*



Barbara Sweeney
 Residential Real Estate Specialist
 (203) 451-6522
 www.BarbaraSweeneyHomes.com
 Barbara.Sweeney@cbmoves.com

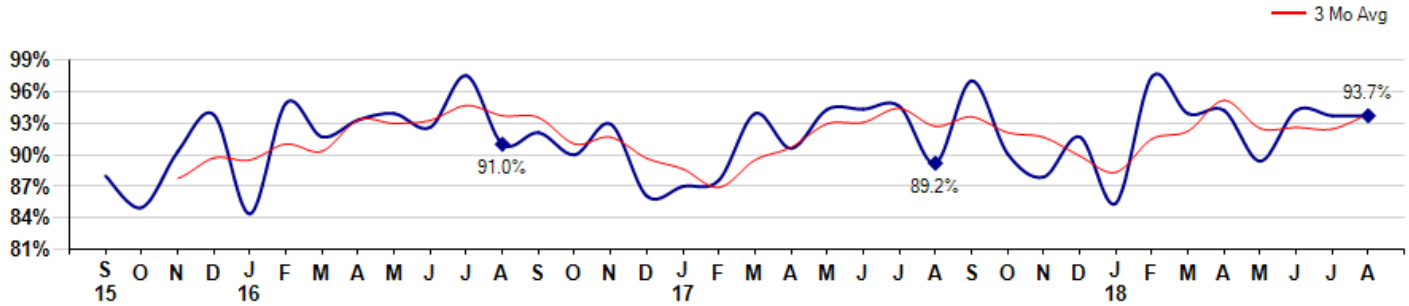


Price Range: 0 to 999999999 | Properties: Single Family Home

Selling Price vs Listing Price

The Selling Price vs Listing Price reveals the average amount that Sellers are agreeing to come down from their list price. The lower the ratio is below 100% the more of a Buyer's market exists, a ratio at or above 100% indicates more of a Seller's market. The August 2018 Selling Price vs List Price of 93.7% was equal to 93.7% last month and up from 89.2% in August of last year.

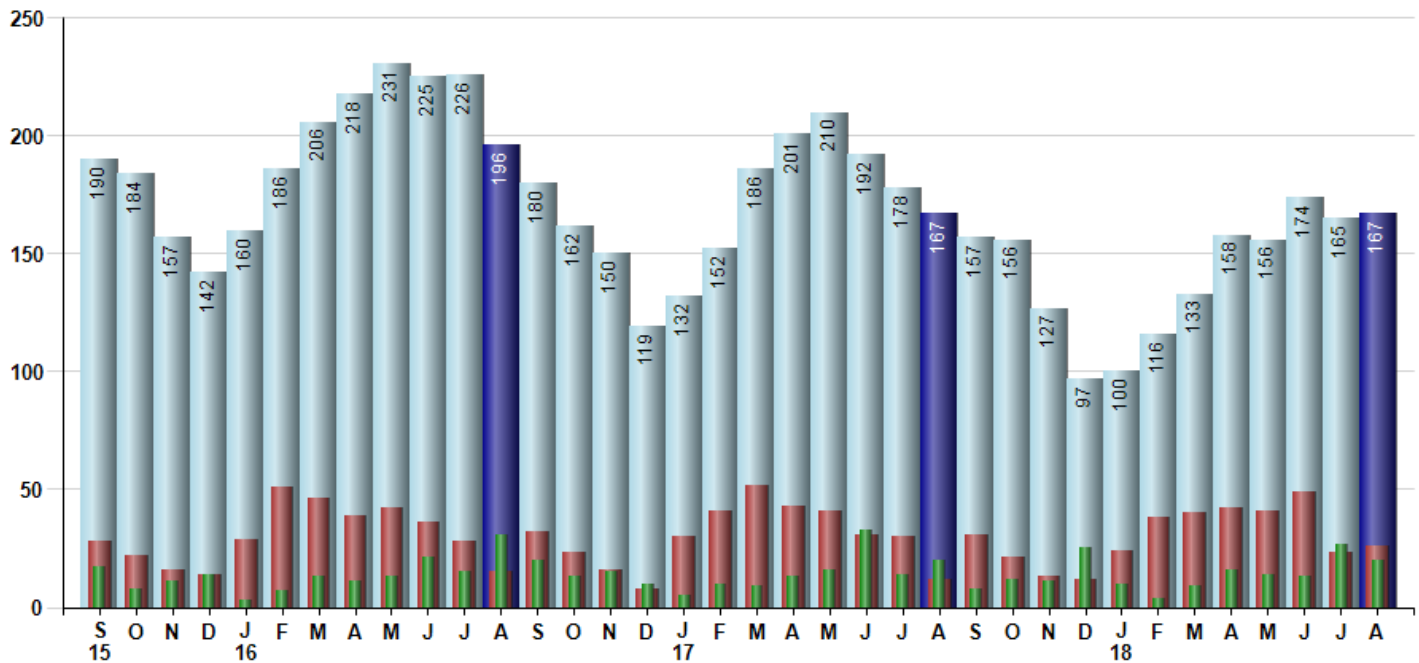
Avg Selling Price divided by Avg Listing Price for sold properties during the month



Inventory / New Listings / Sales

This last view of the market combines monthly inventory of Properties for sale along with New Listings and Sales. The graph shows the basic annual seasonality of the market as well as the relationship between these items. The number of New Listings in August 2018 was 26, up 13.0% from 23 last month and up 116.7% from 12 in August of last year.

Inventory New Listings Sold



© 2018 Coldwell Banker Residential Brokerage. All Rights Reserved. Coldwell Banker Residential Brokerage fully supports the principles of the Fair Housing Act and the Equal Opportunity Act. Coldwell Banker Residential Brokerage is operated by a subsidiary of NRT LLC. Coldwell Banker and the Coldwell Banker Logo are registered service marks owned by Coldwell Banker Real Estate LLC.

Based on information from SmartMLS for the period 9/1/2015 through 8/31/2018. Due to MLS reporting methods and allowable reporting policy, this data is only informational and may not be completely accurate. Therefore, Coldwell Banker Residential Brokerage does not guarantee the data accuracy. Data maintained by the MLS's may not reflect all real estate activity in the market.

