

City: Westport



Barbara Sweeney
Residential Real Estate Specialist
(203) 451-6522
www.BarbaraSweeneyHomes.com
Barbara.Sweeney@cbmoves.com



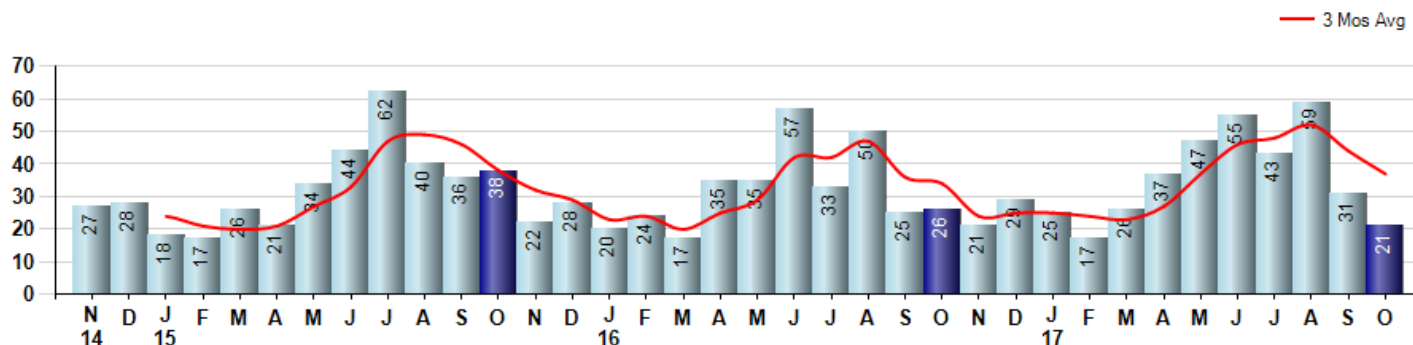
Price Range: 0 to 999999999 | Properties: Single Family Home

Market Profile & Trends Overview	Month	Trending Versus*:				Trending Versus*:		
		LM	L3M	PYM	LY	YTD	PriorYTD	PriorYear
Median List Price of all Current Listings	\$1,649,000	0%		3%				
Average List Price of all Current Listings	\$2,123,894	0%		3%				
October Median Sales Price	\$1,375,000	7%	8%	-8%	7%	\$1,325,000	3%	3%
October Average Sales Price	\$1,620,762	3%	9%	7%	7%	\$1,568,333	3%	3%
Total Properties Currently for Sale (Inventory)	339	-9%		-12%				
October Number of Properties Sold	21	-32%		-19%			12%	
October Average Days on Market (Solds)	104	-14%	-14%	-41%	-36%	152	-6%	-6%
Asking Price per Square Foot (based on New Listings)	\$357	-14%	-9%	-5%	-14%	\$406	-3%	-2%
October Sold Price per Square Foot	\$380	3%	3%	17%	2%	\$370	-3%	-1%
October Month's Supply of Inventory	16.1	35%	41%	9%	12%	12.6	-14%	-13%
October Sale Price vs List Price Ratio	88.4%	-3.9%	-4%	0%	-3.5%	92.1%	0.2%	0.6%

* LM=Last Month / L3M=Last 3 Months / PYM=Same Month Prior Year / LY=Last Year / YTD = Year-to-date

Property Sales

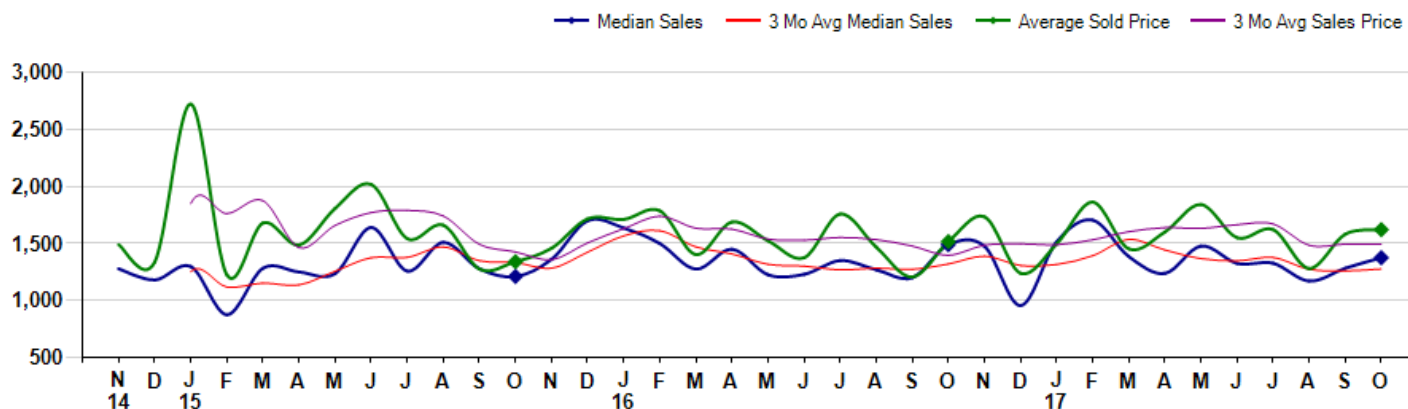
October Property sales were 21, down -19.2% from 26 in October of 2016 and -32.3% lower than the 31 sales last month. October 2017 sales were at their lowest level compared to October of 2016 and 2015. October YTD sales of 361 are running 12.1% ahead of last year's year-to-date sales of 322.



Prices

The Median Sales Price in October was \$1,375,000, down -7.7% from \$1,489,500 in October of 2016 and up 7.2% from \$1,282,500 last month. The Average Sales Price in October was \$1,620,762, up 6.9% from \$1,516,231 in October of 2016 and up 2.5% from \$1,581,984 last month. October 2017 ASP was at highest level compared to October of 2016 and 2015.

Median means Middle (the same # of properties sold above and below Median) (000's)



City: Westport



Barbara Sweeney
Residential Real Estate Specialist
(203) 451-6522
www.BarbaraSweeneyHomes.com
Barbara.Sweeney@cbmoves.com



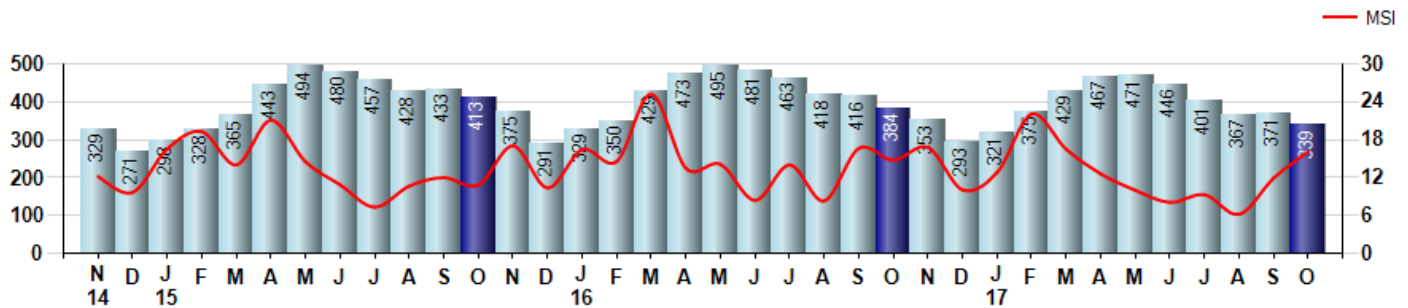
Price Range: 0 to 999999999 | Properties: Single Family Home

Inventory & MSI

The Total Inventory of Properties available for sale as of October was 339, down -8.6% from 371 last month and down -11.7% from 384 in October of last year. October 2017 Inventory was at the lowest level compared to October of 2016 and 2015.

A comparatively lower MSI is more beneficial for sellers while a higher MSI is better for buyers. The October 2017 MSI of 16.1 months was at its highest level compared with October of 2016 and 2015.

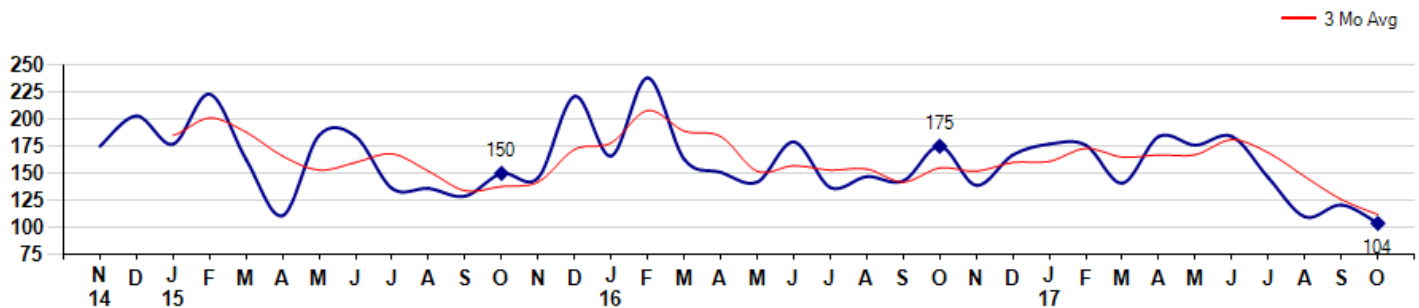
MSI is the # of months needed to sell all of the Inventory at the monthly Sales Pace



Market Time

The average Days On Market(DOM) shows how many days the average Property is on the Market before it sells. An upward trend in DOM tends to indicate a move towards more of a Buyer's market, a downward trend a move towards more of a Seller's market. The DOM for October was 104, down -14.0% from 121 days last month and down -40.6% from 175 days in October of last year. The October 2017 DOM was at its lowest level compared with October of 2016 and 2015.

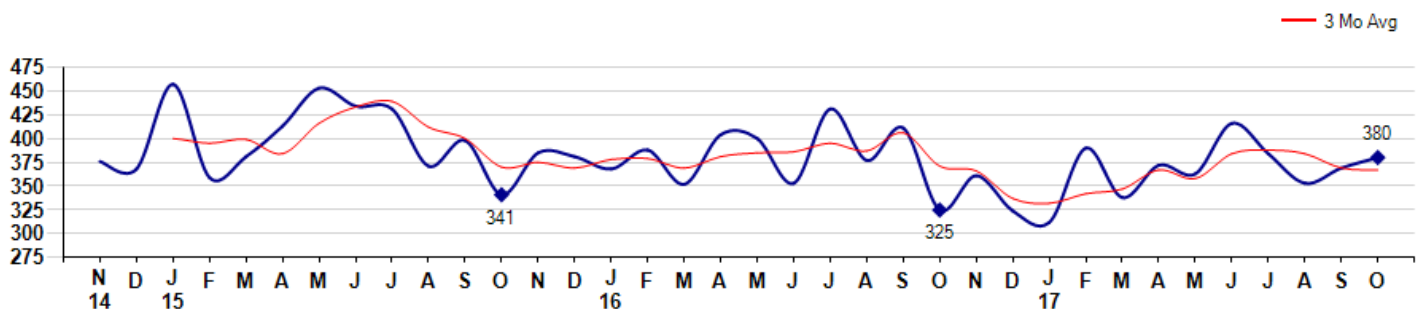
Average Days on Market(Listing to Contract) for properties sold during the month



Selling Price per Square Foot

The Selling Price per Square Foot is a great indicator for the direction of Property values. Since Median Sales Price and Average Sales price can be impacted by the 'mix' of high or low end Properties in the market, the selling price per square foot is a more normalized indicator on the direction of Property values. The October 2017 Selling Price per Square Foot of \$380 was up 3.0% from \$369 last month and up 16.9% from \$325 in October of last year.

Average Selling Price per Square Foot for properties that sold during the month



City: Westport



Barbara Sweeney
 Residential Real Estate Specialist
 (203) 451-6522
 www.BarbaraSweeneyHomes.com
 Barbara.Sweeney@cbmoves.com

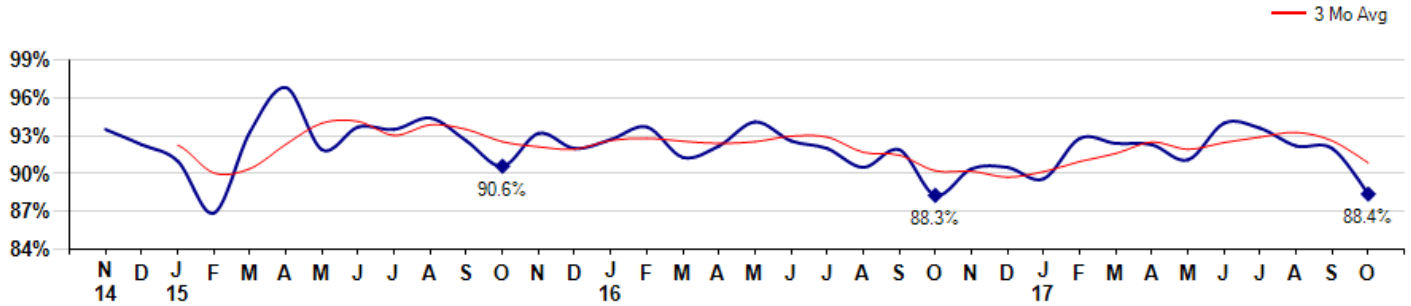


Price Range: 0 to 999999999 | Properties: Single Family Home

Selling Price vs Listing Price

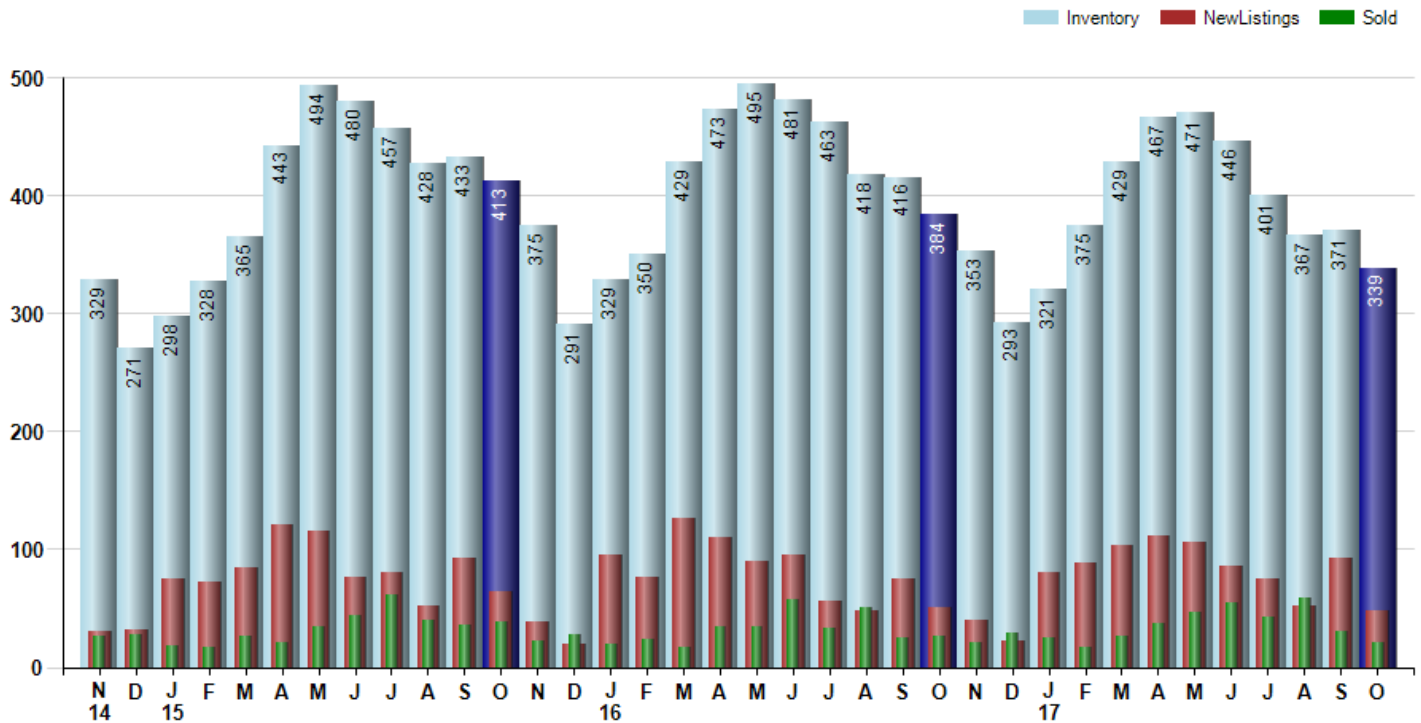
The Selling Price vs Listing Price reveals the average amount that Sellers are agreeing to come down from their list price. The lower the ratio is below 100% the more of a Buyer's market exists, a ratio at or above 100% indicates more of a Seller's market. The October 2017 Selling Price vs List Price of 88.4% was down from 92.0% last month and up from 88.3% in October of last year.

Avg Selling Price divided by Avg Listing Price for sold properties during the month



Inventory / New Listings / Sales

This last view of the market combines monthly inventory of Properties for sale along with New Listings and Sales. The graph shows the basic annual seasonality of the market as well as the relationship between these items. The number of New Listings in October 2017 was 48, down -48.4% from 93 last month and down -5.9% from 51 in October of last year.



© 2017 Coldwell Banker Residential Brokerage. All Rights Reserved. Coldwell Banker Residential Brokerage fully supports the principles of the Fair Housing Act and the Equal Opportunity Act. Coldwell Banker Residential Brokerage is operated by a subsidiary of NRT LLC. Coldwell Banker and the Coldwell Banker Logo are registered service marks owned by Coldwell Banker Real Estate LLC.

Based on information from SmartMLS for the period 11/1/2014 through 10/31/2017. Due to MLS reporting methods and allowable reporting policy, this data is only informational and may not be completely accurate. Therefore, Coldwell Banker Residential Brokerage does not guarantee the data accuracy. Data maintained by the MLS's may not reflect all real estate activity in the market.

